

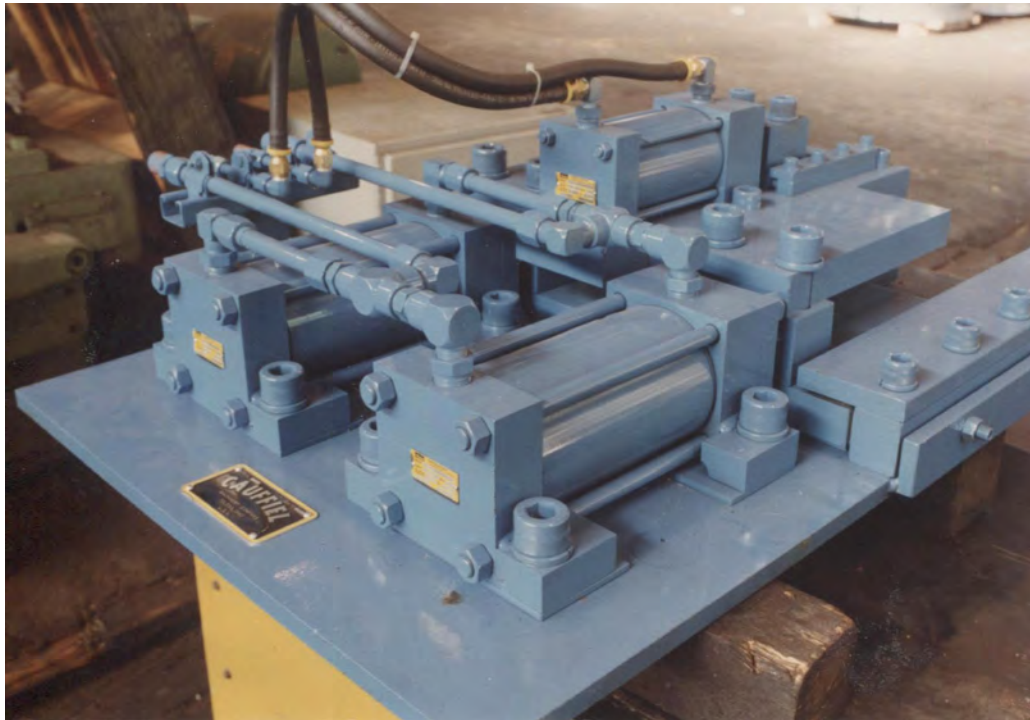
## AMERICAN STEEL PRODUCTS COMPANY

3171 N. Republic Blvd., Toledo, Ohio 43615 USA

Telephone 419.843.6051 | Fax 419.843.5288 | [www.americansteel.com](http://www.americansteel.com)



## DRAWBENCHES



## 250,000# PUSH POINTER FOR 5" TO 1" BAR TO BE INSTALLED IN A 150,000# DRAWBENCH

We manufacture and size drawbenches;

50,000 lb. capacity x 42' for bar or tube

150,000 lb. capacity x 52' with push pointer

200,000 lb. capacity x 52' triple draw for 1" to 5" round with push pointer

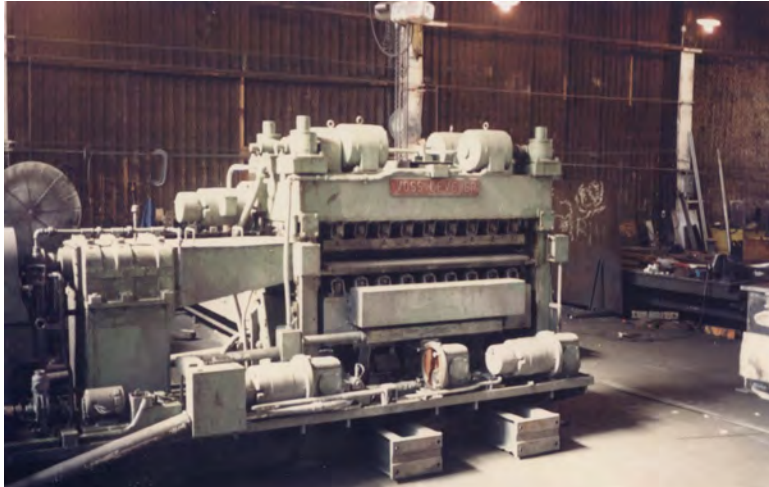
Our ASP drawbenches and push pointers can be equipped for bar or tube in single, double and triple draw configurations. Our push pointers can be installed on your drawbench or designed with one of our drawbench designs.

The push pointer uses hydraulic clamping and dual side hydraulic cylinders to reduce the diameter. To push the bar through the reducing die so the pull drawbench buggy can clamp and pull the material to produce cold drawn bars or tubing with wall thickness and outside diameter reduction.

# AMERICAN STEEL PRODUCTS COMPANY

3171 N. Republic Blvd., Toledo, Ohio 43615 USA

Telephone 419.843.6051 | Fax 419.843.5288 | [www.americansteel.com](http://www.americansteel.com)



**VOSS LEVELER (TO BE REBUILT)**



**80,000# ABOVE FLOOR COIL PROCESSING LINE IN STEEL MILL FOR INSPECTION AND TENSION LEVELING FOR SPEEDS UP TO 1,000 FPM**



**DOUBLE LEVELER CUT-TO-LENGTH LINE READY FOR TESTING UNDER CRANE ON AMERICAN STEEL PRODUCTS' ASSEMBLY AND TESTING FLOOR**

# AMERICAN STEEL PRODUCTS COMPANY

3171 N. Republic Blvd., Toledo, Ohio 43615 USA

Telephone 419.843.6051 | Fax 419.843.5288 | [www.americansteel.com](http://www.americansteel.com)



**LOOP TYPE, HIGH PRODUCTION  
CUT-TO-LENGTH LINE,  
AUTOMATIC STACKER AND FLOOR  
RUNOUT, WOOD DUNNAGE  
SHOWN IN STACKER AREA**



**BACKED UP CORRECTIVE LEVELER W/LOOP CONTROL FOR  
PRESS FEED LINE OR CUT-TO-LENGTH LINE**



**WIDE ROLL BACKED UP CORRECTIVE LEVELER FOR  
ALUMINUM AND STAINLESS STEEL, NO BACK UP ROLL  
SHADOWS AS COMMON 4-HIGH LEVELERS**