

AMERICAN STEEL PRODUCTS COMPANY

3171 N. Republic Blvd., Toledo, Ohio 43615 USA

Telephone 419.843.6051 | Fax 419.843.5288 | www.americansteel.com



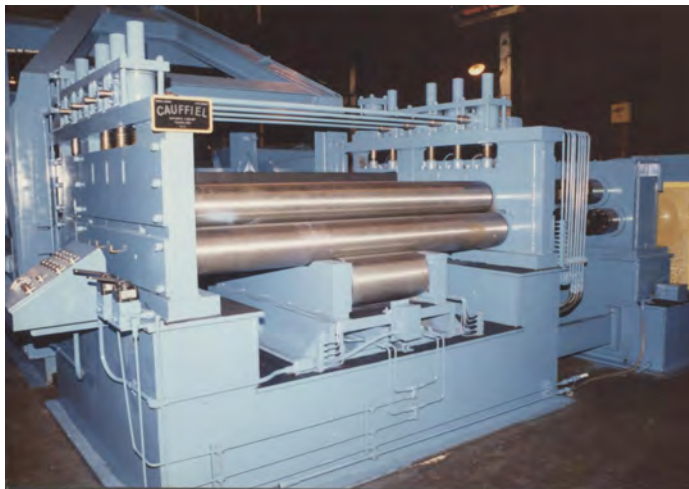
CUT-TO-LENGTH LINES



**HIGH PRODUCTION, DOUBLE
LEVELER CUT-TO-LENGTH LINE
W/LOOP SYSTEM**



**LOOP TYPE, HIGH PRODUCTION CUT-TO-LENGTH LINE,
AUTOMATIC STACKER AND FLOOR RUNOUT, WOOD
DUNNAGE SHOWN IN STACKER AREA**



**LARGE ROLL, HEAVY GAUGE LEVELER TO REMOVE
CROSSBOW AND STRETCHED EDGE MATERIAL**

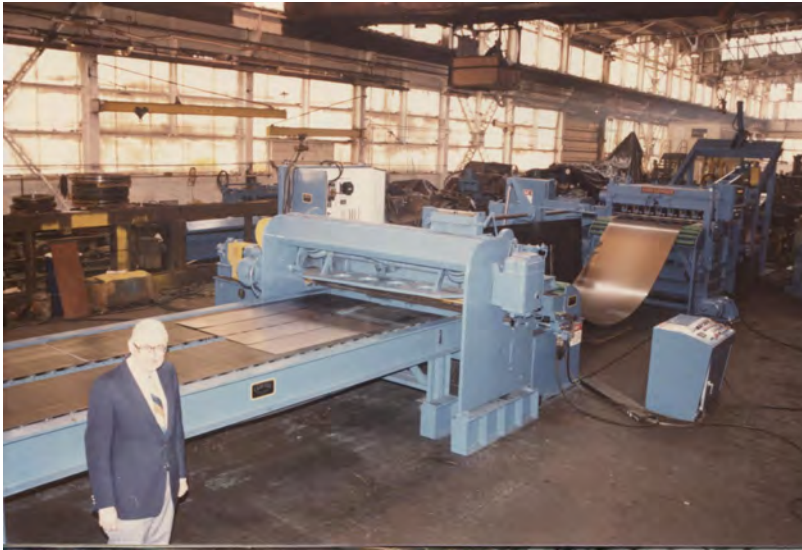
AMERICAN STEEL PRODUCTS COMPANY

3171 N. Republic Blvd., Toledo, Ohio 43615 USA

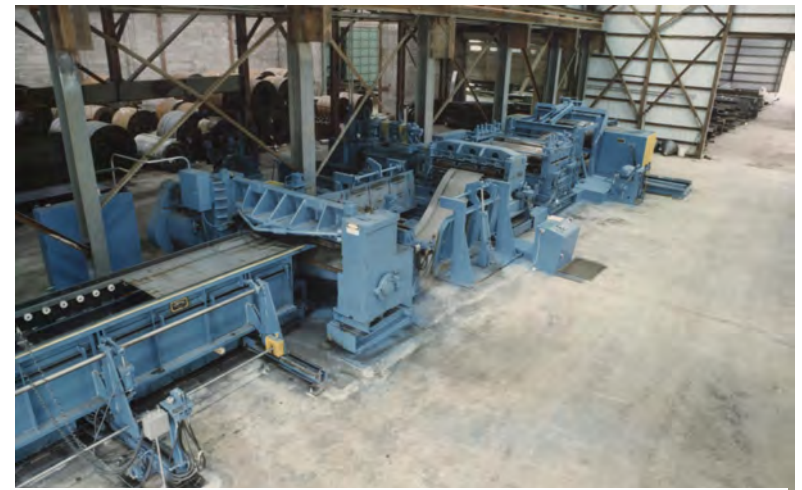
Telephone 419.843.6051 | Fax 419.843.5288 | www.americansteel.com



CUT-TO-LENGTH SYSTEMS



**MULTIPLE SLIT/MULTIPLE
BLANK CUT-TO-LENGTH LINE**

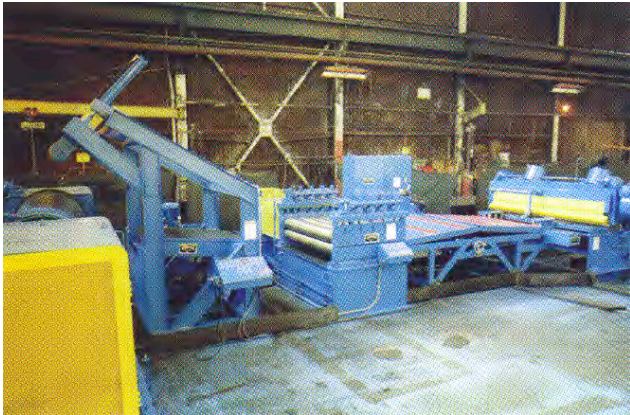


**DOUBLE LEVELER CUT-TO-LENGTH LINE
FOR SPEEDS UP TO 200 FPM**



**POLYURETHANE ROLL FEED W/LONG EDGE GUIDES AND
CANTINEER SECTION FOR STAINLESS STEEL & ALUMINUM
FOR CUT-TO-LENGTH OR PRESS FEED LINE**

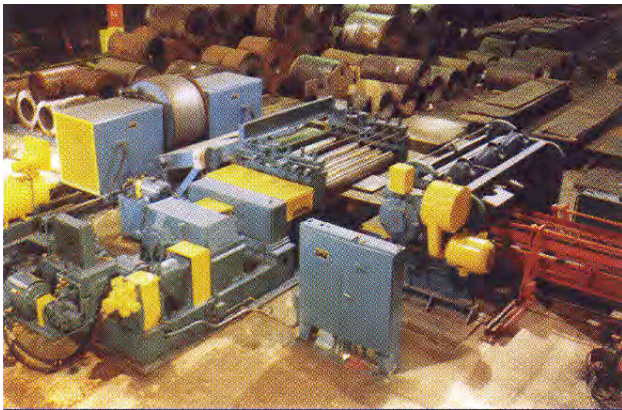
CUT-TO-LENGTH LINES USING CAUFFIEL LEVELER/PROCESSOR/FLATTENER



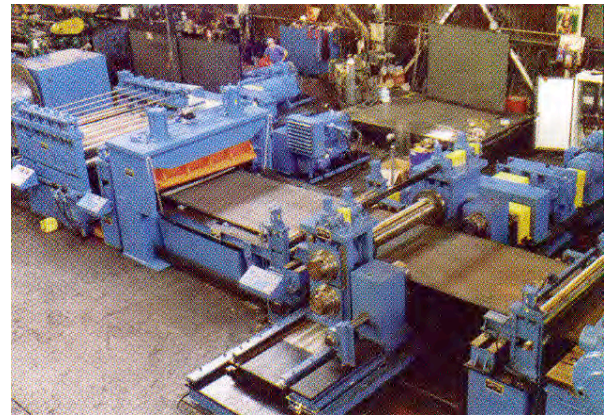
74" x 1/4" to .030" x 60,000# Cut-to-Length Line with Peeler & Hold Down Roll



Top Feed Cut-to-Length System



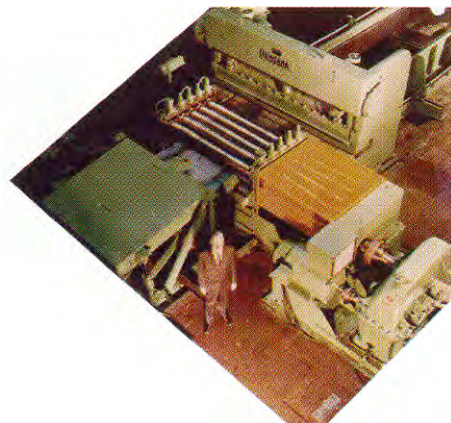
5/8" x 96" Cut-to-Length Line



5/8" x 78" Cut-to-Length Line with Leveler, Crop Shear, Edge Trimmer & Scrap Cutter



84" x 1/2" x 60,000# Cut-to-Length Line with Edge Trimming



84" x 1/2" x 60,000# Cut-to-Length Line