

# AMERICAN STEEL PRODUCTS COMPANY

3171 N. Republic Blvd., Toledo, Ohio 43615 USA

Telephone 419.843.6051 | Fax 419.843.5288 | [www.americansteel.com](http://www.americansteel.com)

**ASP**

American Steel Products Company



**TENSION STAND SYSTEM FOR SCROLL SLITTING LINE  
FOR MOTOR OR TRANSFORMER SILICON STEEL  
SHOWING SCROLL SLIT MATERIAL RECOILED**

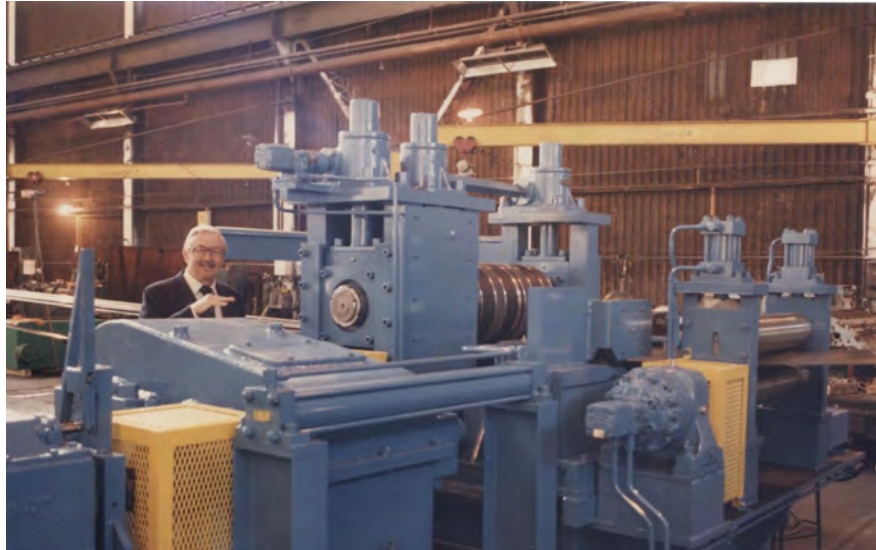
# AMERICAN STEEL PRODUCTS COMPANY

3171 N. Republic Blvd., Toledo, Ohio 43615 USA

Telephone 419.843.6051 | Fax 419.843.5288 | [www.americansteel.com](http://www.americansteel.com)



## SLITTING LINES



**HEAVY GAUGE NARROW SLITTER W/ROTARY CROP SHEAR AND PINCH ROLLS FOR MANY CUTS OF 3/8" IN SINGLE PASS**



**SLITTER W/SLIDING OUTBOARD SUPPORT TO REDUCE SPAN OF ARBORS TO DECREASE DEFLECTION FOR MANY CUTS OF .250" IN SINGLE PASS**

# AMERICAN STEEL PRODUCTS COMPANY

3171 N. Republic Blvd., Toledo, Ohio 43615 USA

Telephone 419.843.6051 | Fax 419.843.5288 | [www.americansteel.com](http://www.americansteel.com)



## SLITTING LINES



**SELF-EJECTING SCRAP WINDERS**



**THROATLESS SLITTER TO SLIT MATERIAL FROM 020" TO  
.500" THICK (REPLACES CROPPING SHEARS IN SLITTING  
AND ROLL FORMING LINES)**

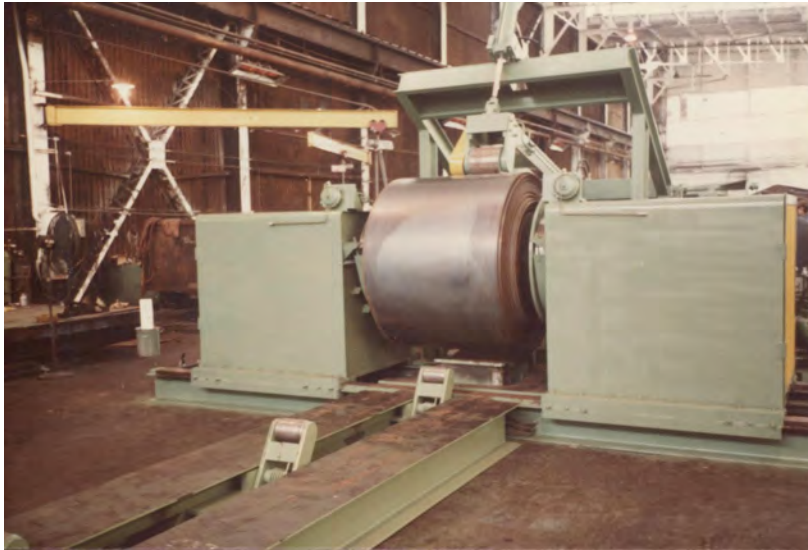
# AMERICAN STEEL PRODUCTS COMPANY

3171 N. Republic Blvd., Toledo, Ohio 43615 USA

Telephone 419.843.6051 | Fax 419.843.5288 | [www.americansteel.com](http://www.americansteel.com)



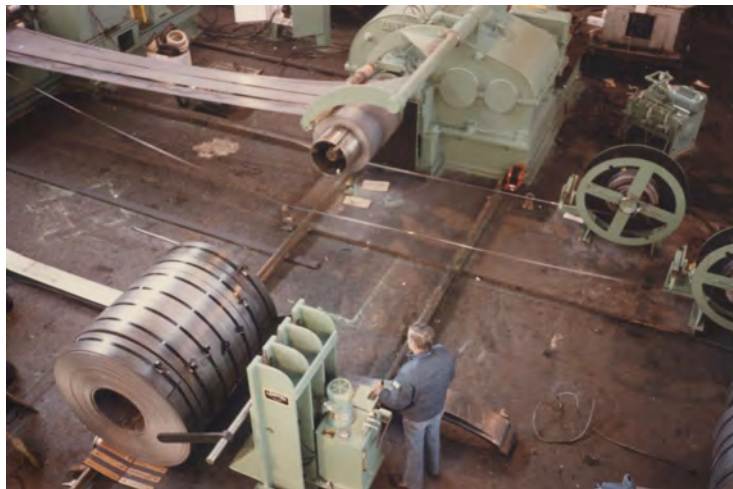
## SLITTING LINES



**DOUBLE-END UNCOILER  
W/PEELER AND THREE-COL  
PUSHER TYPE RAMP**



**NARROW HEAVY GAUGE SLITTING LINE, 12 CUTS OF  
.250", ONE PASS, HOT ROLLED STEEL**



**EXIT COIL CAR W/HOLDING FINGERS  
AND SCRAP WINDERS**

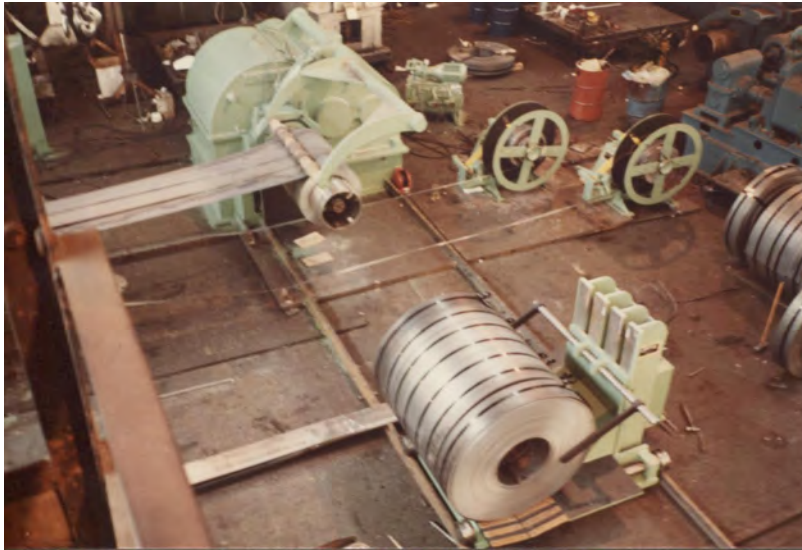
# AMERICAN STEEL PRODUCTS COMPANY

3171 N. Republic Blvd., Toledo, Ohio 43615 USA

Telephone 419.843.6051 | Fax 419.843.5288 | [www.americansteel.com](http://www.americansteel.com)



## SLITTING LINES



**EXIT COIL CAR W/HOLDING FINGERS AND SCRAP WINDERS**



**EXIT COIL CAR FROM RECOILER W/HOLDING FINGERS FOR C-HOOK REMOVAL WITHOUT TURNSTILE**



**MODERNIZED SLITTING LINE SYSTEM FOR HOT ROLLED STEEL FOR STRUCTURAL TUBE MILL**